



Human Machine Interface

# XGT Panel XP Series





Windows CE based new HMI

**XGT Panel**

**XP Series**

Fresh start with XP series suits your every requirement.



## neXt Generation Technology

### Advanced technology for the customers.

XGT Panel Series is a brand new HMI product with an intensive and advanced technology of LSIS to cope with the rapidly changing market situation. It is an innovative product having both reliability and convenience based on the Windows CE.

With the user-oriented convenience, it offers high resolution display, prompt data transmission and processing, and an user-friendly interface.

LSIS provides the Leading Solution to the automation field with the XGT Panel Series.

We are confident of our XGT Panel Series which contains high technology and our commitment to quality at the HMI market.



### Superb performance, convenient functions

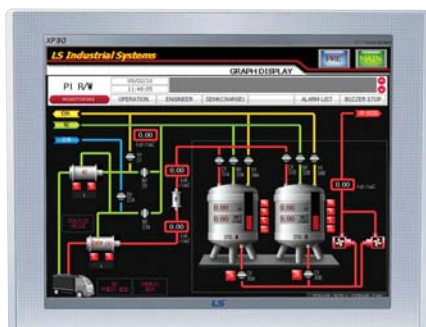
- High and vivid distinction with 65,536 colors.
- Various vector symbols and high quality raster symbols.
- Support diverse file types including BMP, JPG, GIF, and WMF, etc.
- Simple movie clip effects with GIF animation.
- 10/100 BASE-T Ethernet interface.
- Convenient and easy screen editing.
- Strengthened data management (Logging, Recipe, and Alarm).
- Read function of a controller's state information (Monitoring and maintenance).
- Multi-lingual display up to 4 languages and easy switching.
- Offline program simulation.
- Tag function of the HMI S/W (Easy to change the address of the graphic objects).
- USB host for the use of peripheral devices (Mouse, keyboard, printer, etc.)
- Sufficient memory space for screen saving (10MB).

# XGT Panel *XP* Series Line Up

## A new and improved Windows CE-based HMI—

38cm  
(15 inch)

### XP90-TTA



TFT color  
XGA (1024×768)  
65,536 colors

#### External Interface



Ethernet I/F



Serial I/F(RS-232C)



Serial I/F(RS422/485)



USB I/F



CF card I/F



Expansion port

31cm  
(12.1 inch)

### XP80-TTA



TFT color  
SVGA (800×600)  
65,536 colors

#### External Interface



Ethernet I/F



Serial I/F(RS-232C)



Serial I/F(RS422/485)



USB I/F



CF card I/F



Expansion port

26cm  
(10.4 inch)

### XP70-TTA



TFT color  
VGA (640×480)  
65,536 colors

#### External Interface



Ethernet I/F



Serial I/F(RS-232C)



Serial I/F(RS422/485)



USB I/F



CF card I/F



Expansion port

### Speed

XP series has Ethernet interface for the rapid transmission of data. XP series communicates with some PLCs and transmit data promptly through the Ethernet interface.



### Expression

XP series supports 65,536 full color display and its mass storage of the flash memory offers best quality.



### Variety

XP series supports not only BMP, JPG graphic file types but also WMF, GIF file for making a movie clip drawing on the screen.







# XGT Panel **XP** Series

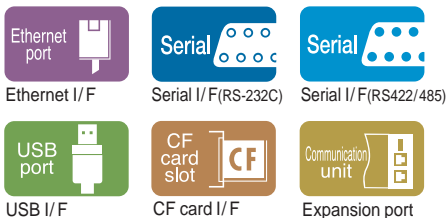
## 21cm (8.4 inch) **XP50-TTA/TTE**



**XP50-TTA** TFT color / 64,536 colors  
VGA (640×480)

**XP50-TTE** TFT color / 256 colors  
VGA (640×480)

### External Interface



※ XP50-TTE: Serial I/F (RS-232C, RS-422/485) and USB I/F only

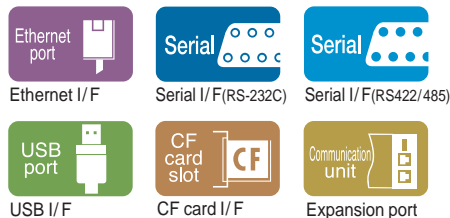
## 14cm (5.7 inch) **XP30-TTA/BTA**



**XP30-TTA** TFT color / 65,536 colors  
QVGA (320×240)

**XP30-BTA** STN MONO (8-bit Gray)  
QVGA (320×240)

### External Interface



## 14cm (5.7 inch) **XP30-TTE/BTE**



**XP30-TTE** TFT color / 256 colors  
QVGA (320×240)

**XP30-BTE** STN MONO Economy (8-bit Gray)  
QVGA (320×240)

### External Interface



## **Multi-Language**

XP series can display many languages which are supported on Microsoft Windows. Real-time conversion of four languages is available during run.



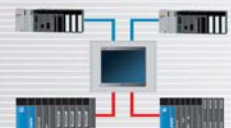
## **Specialization**

XP series strengthens advanced features such as Logging, Recipe, Alarm, Script, and Scheduler. It helps users for the liberal and practical use.



## **Network**

XP series enables users to implement data communication with several controllers at one time. The maximum 4 PLCs are connectable to a XP machine.



# XGT Panel XP Series Feature

## Data processing

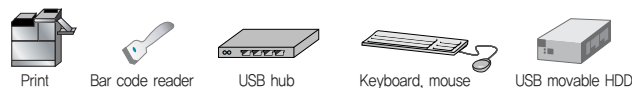
### Faster transmission of mass storage data

- ❏ XP series' transmission speed is improved with the Ethernet interface. It is faster(10/100Mbps) than RS-232C interface (115Kbps).
- ❏ XP series includes a 10 MB memory, so it can offer advanced features such as upload/download drawing data, Logging, Alarm, and Recipe.
- ❏ XP series supports GIF, WMF file type as well as BMP, JPG, which makes it easier to draw.



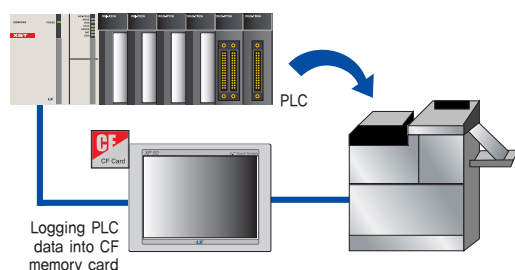
### Easy accessible USB host

- ❏ 2 channels of USB interfaces are installed as a host.
- ❏ XP series is compatible to a variety of devices through the USB interface.

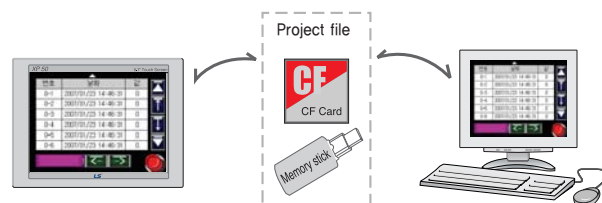


### CF memory card and USB memory

- ❏ You can save the PLC data to a CF memory card or a USB memory.
- ❏ It can be converted into CSV file type.



- ❏ Analog touch panel eliminates scale marks to improve the resolution as compared to the matrix touch panel. It adopts an analog resistive touch panel for the better visibility and the free disposition of objects.
- ❏ It helps free locating of the objects.



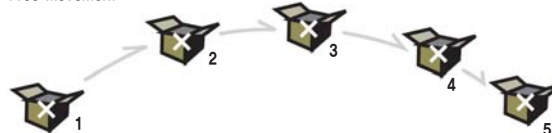
### Multi-language support

- ❏ It offers a real-time conversion of four languages and various choices of language for designers.
- ❏ You can switch the languages which you want to use during the operation with the pre-recorded string table.
- ❏ It offers the MS Windows-supported languages such as Chinese(prc), Chinese(Taiwan), Danish, German, English, Finnish, French, Greek, Italian, Korean, Norwegian, Polish, Portuguese, Russian, Swedish, Spanish, Hungarian, etc.



- ❏ It displays components of fixed values or word devices on the screen. Preset- component images can be used
- ❏ It provides a free movement with a user-defined path, a linear movement, and a device movement on the X-Y coordinates.

#### • Free movement



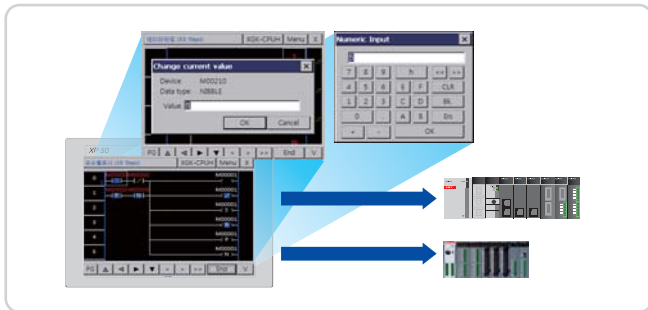
#### • Linear movement



# Display

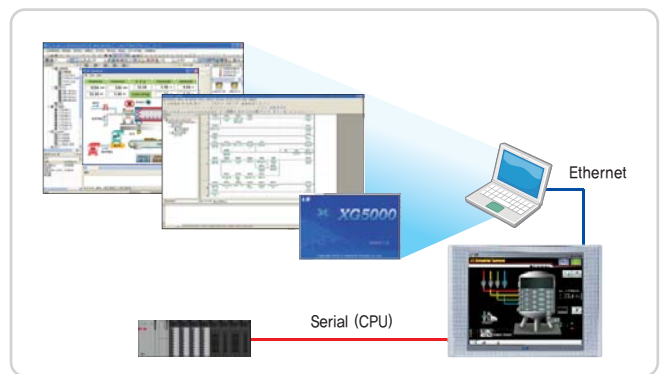
## Diagnostic via program monitoring

- XP series' program monitoring function offers easy diagnostic without additional option to monitor PLC which is connected to HMI.
- The ladder program can be saved in CF card or USB memory.
- It offers several functions such as device search, subroutine search, label search and step search.



## Path-through

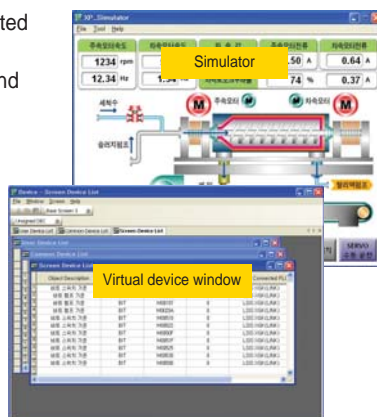
- When XGT Panel is connected to PLC via CPU port, monitoring and modification of PLC program can be done using Ethernet.
- The remote debugging can be executed.



## Useful simulator function

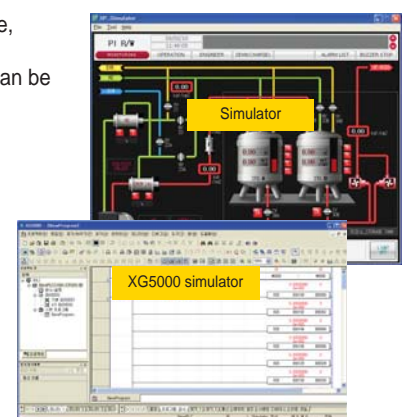
### Offline simulation

- Operation can be executed without hardware.
- It supports monitoring and manipulation of device.
- Program error can be checked before sending to XGT Panel.



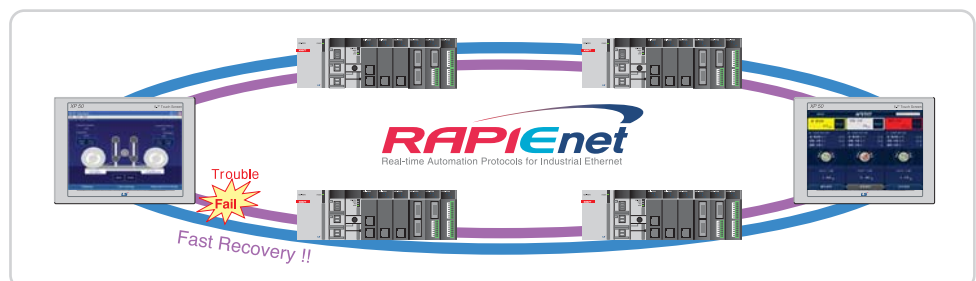
### Interworking with PLC simulator

- When LS PLC software, XG5000, is executed, XGT Panel simulator can be operated with XG5000 together.



## RAPiEnet optic ring (XPO-EIMT)

- XPO-EIMT communication option card enables high speed communication via RAPiEnet.
- It supports daisy chain and ring structure (Dual port).
- RAPiEnet is more reliable and convenient communication methods compared to START communication.





# XGT Panel XP Series Feature

## Project Printing

### Prompt display

Advanced

#### Alarm

##### History alarm

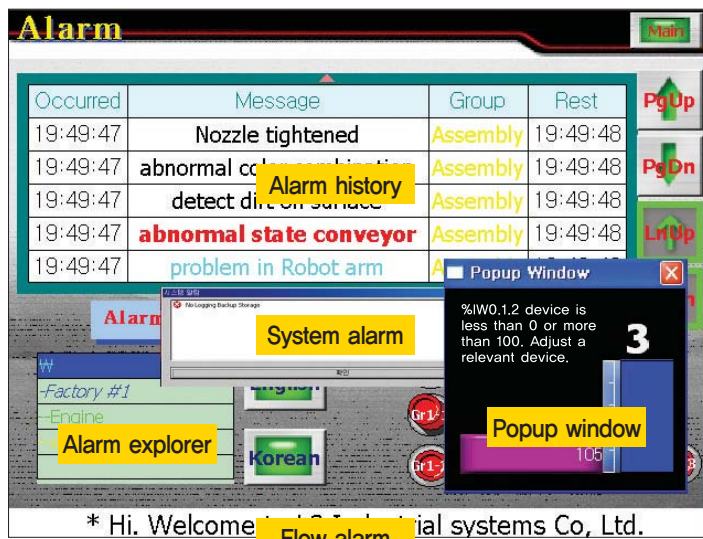
It saves alarmed contents into a history file. You can classify the alarms in detail into the maximum 8 upper and lower class groups or alarm lists. Through the alarm explorer, you can choose some alarms to display. If you register a detailed screen to verify the alarms in detail, you can create a window which is connected to the alarms.

##### Flow alarm

It displays a current alarm on the lower position of the screen for the rapid response to users. Flowing alarm can be configured to use only with a specific condition. You can apply it to transmit company or device information.

##### System alarm

If a serious fault or a trouble of the HMI occurs, the system alarm informs users.



### Easy management with backup files

Advanced

#### Logging

It offers a cyclic logging operating repeatedly according to the time and a device status, and a conditional logging which works under the condition of the device.

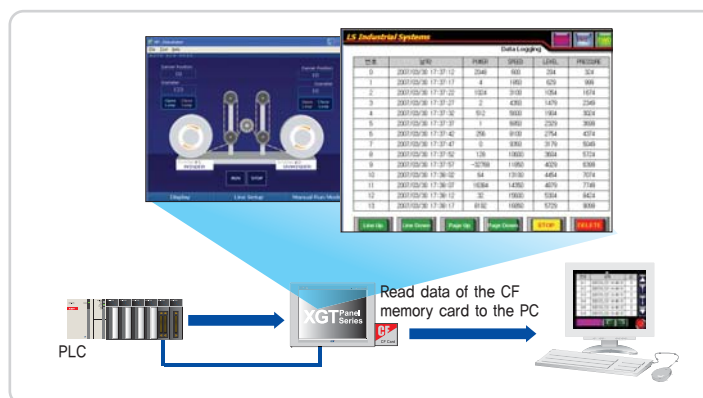
The max. number of 32 logging areas (condition) are available, and each size of the area can be expanded up to 256Kbyte.

It is capable of saving the maximum 32 Words (cf. 32 bits for the bit logging) by one logging.

Logging is basically saved on the internal SRAM (256Kbyte), and you can run a back up to a CF memory, a USB memory and a movable HDD, etc.

You can verify the logging data on the XGT Panel through the logging view object.

Converted CSV types can be edited on Microsoft Excel.



### Email service of alarm and logging data

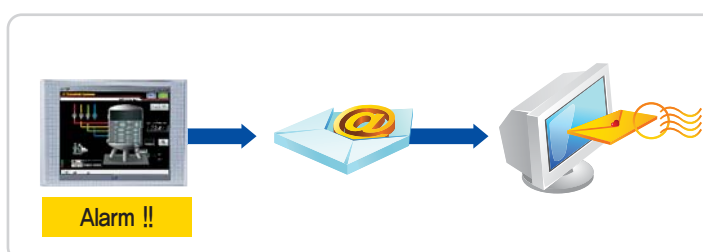
Advanced

XGT Panel offers the function of e-mail service to the registered address as a CSV file.

It can send Logging data with the selected logging group.

E-mail service includes the function of sending e-mails / notifications to the users when user-defined alert cases occur

The logging and alarm file sent to PC can be open with EXCEL.

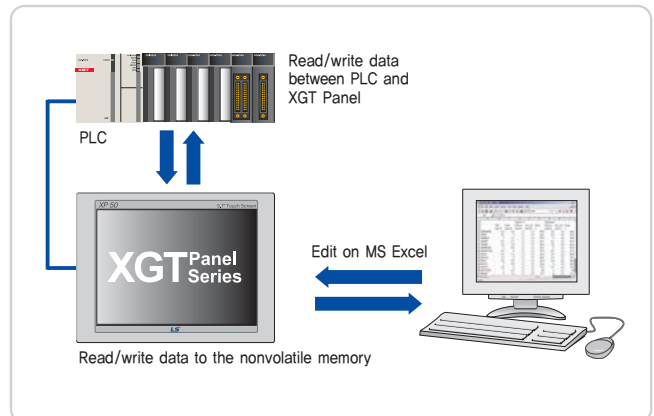




## Recipe

Advanced

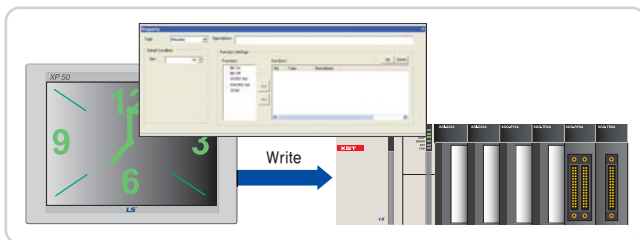
- Recipes provide an easy method for operators and users to change the value of hundreds of settings in automation devices. Backup memory is installed, it makes it possible to use the recipe function to transfer setting values to other equipment. It is able to register up to 32 recipes at the XP-Builder. The maximum 100 Word/Dword devices and 16 data blocks are able to assign in each recipe. Recipe data is saved in the nonvolatile memory of the XP series. It maintains the latest data when the power is shut off. You can register and edit the recipe data through the XGT Panel or Microsoft Excel.



## Scheduler

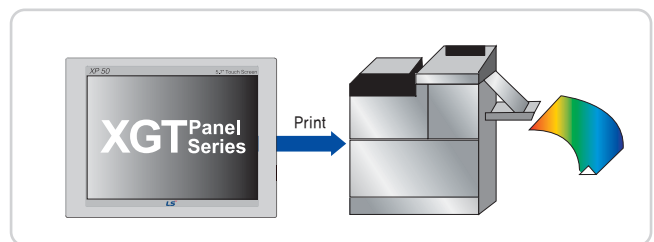
Advanced

- Scheduler appoints operations and times to do the operation on the specified time. Bit On/Off, setting a Word value, and a script operation are available. Each scheduler can assign operations up to 8. Schedulers can be produced up to 32.



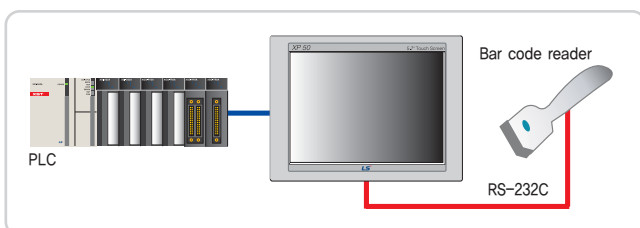
## Print

- You can print a screen or a history of alarm events from the HMI. It is available to connect to a printer with a USB port.



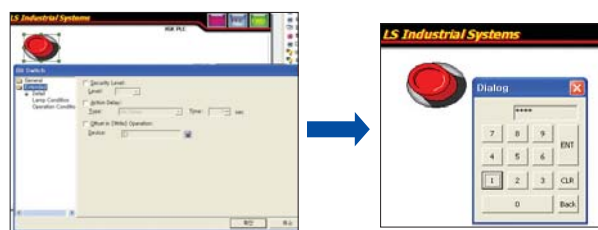
## Bar code scan

- ASCII data which is inputted by a bar code scanner can be saved into a user-defined PLC or an internal memory of the XGT Panel. User can set a completion bit to verify whether the XGT Panel read correct data. The bar code communication operates only with a built-in RS-232C interface of the XGT Panel.



## Security

- When you operate the PLC control with Objects such as switches, input and output objects, you can prescribe the security level to the authorized users only. Total 10 security levels are supported, and a low level password can access to a higher level. After an approval of the security level, the session is only maintained during a period of time.



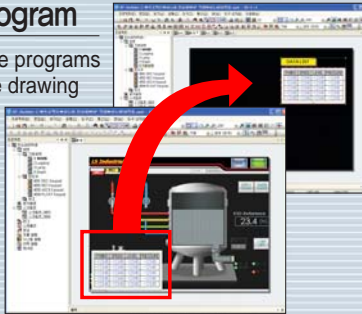
# XGT Panel *XP* Series Software

## Development Tool : XP-Builder

### XP-Builder Functions

#### Multi-thread program

- ❏ You can run multiple programs at one time and use drawing data from another program.



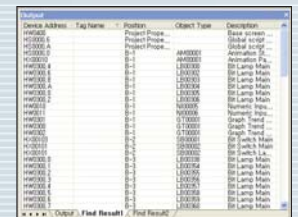
#### Debugging program

- ❏ You can verify some errors which happens to the data at the output window.
- ❏ Display details of the errors.



#### Cross reference

- ❏ Display devices and tags which are in use.



### Edit program : XP-Builder

#### Project

- ❏ Add and edit screens and special functions of the project.

#### Data view

- ❏ Display the objects which is used on a current screen.
- ❏ Show the property window by double click.

#### Output bar

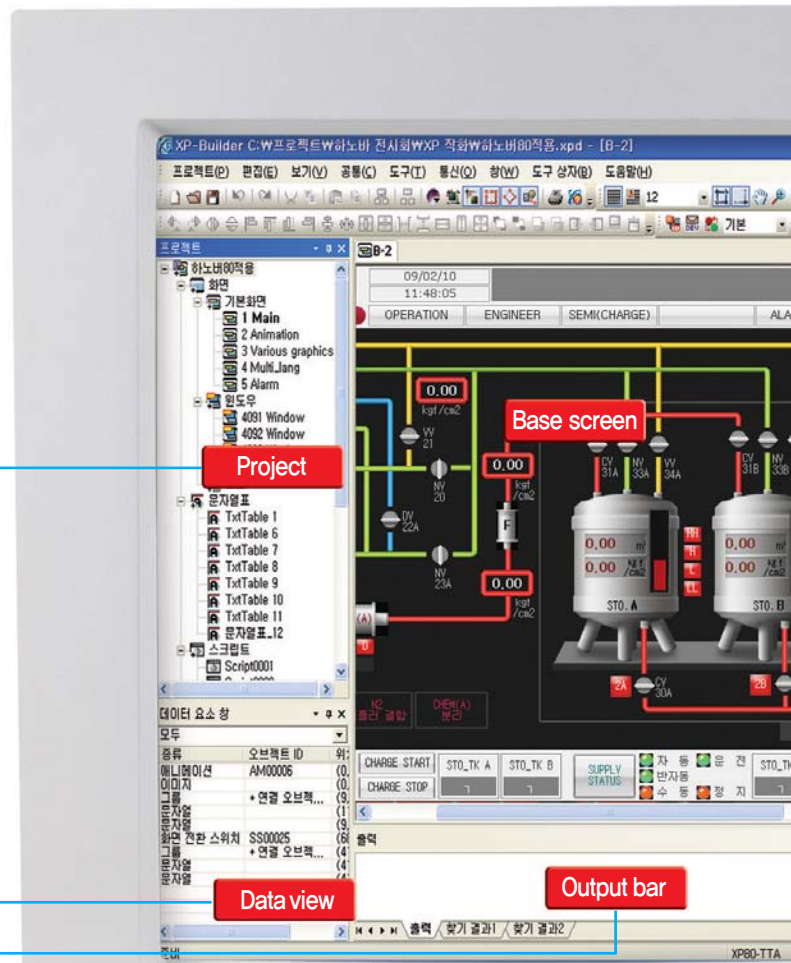
- ❏ Output errors about the data and display search results.
- ❏ Display details of errors.

#### Toolbox

- ❏ Draw objects and diagrams.

#### Library

- ❏ Categorized libraries are displayed and the preview is supported.
- ❏ Easy register and deletion of the user library.
- ❏ Drag & Drop operation.





## Tag

- ❑ User can rename a device address to use it as an object.
- ❑ If you assign a tag to the set up device of an object, you can change the addresses of devices at a time.
- ❑ It is available to register up to 10,000.

번호	명칭	장치명	주소	비고
SourceA	BIT	HW0001.F		
SourceA_V1	BIT	HW0001.F		
SourceA_V2	BIT	HW0001.E		
SourceA_V3	BIT	HW0001.E		
SourceA_V4	BIT	HW0001.E		
SourceA_V5	BIT	HW0001.E		

## Simulation

### Off-line program simulation

- ❑ You can confirm the drawing data on a PC without a XGT Panel.
- ❑ Device monitoring and operation can be checked on a PC.
- ❑ The simulator supports same operations as a XGT Panel.
- ❑ Data errors and normal operations could be checked before XP-Builder transmits the drawing data to the HMI.

Arial : ABCDEFGHIJKLMNOPQRSTUVWXYZ  
 Book : ABCDEFGHIJKLMNOPQRSTUVWXYZ  
 Impact : ABCDEFGHIJKLMNOPQRSTUVWXYZ  
 Helvetica : ABCDEFGHIJKLMNOPQRSTUVWXYZ  
 Tahoma : ABCDEFGHIJKLMNOPQRSTUVWXYZ  
 Time : ABCDEFGHIJKLMNOPQRSTUVWXYZ  
 Verdana : ABCDEFGHIJKLMNOPQRSTUVWXYZ

가나다라마바사아자차카타파하  
 가나다라마바사아자차카타파하  
 가나다라마바사아자차카타파하  
 가나다라마바사아자차카타파하

## GIF animation

- ❑ You can use GIF animation to take effects according to the state of specified bit. You can make and add a movie clip of the actual spot to inform users accurately. (A movie clip file can be produced using a commercial GIF animator program.)



## Script

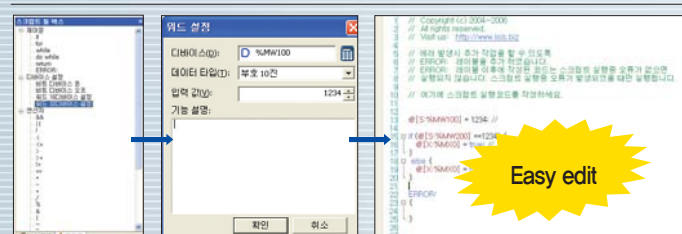
### Flexible script language

- ❑ Script language can supplement the offered object function to draw the data.
- ❑ Script language is a structured language such as C programming language for the convenience of users.
- ❑ Script language with complex arithmetic operations and various functions can reduce a load of external controllers.
- ❑ Grammar inspection can validate the script languages.

### Various script use

- ❑ XP-Builder has various script usages such as global script, object script, etc.
- ❑ Global script operates with On/Off signal of an assigned device. It is able to run a script operation by periods using a special device.
- ❑ The object script is available to do a target device operation of the object.
- ❑ Script can be operated at the moment when a screen is opened(or closed).

### Useful script toolbox and error inspection.



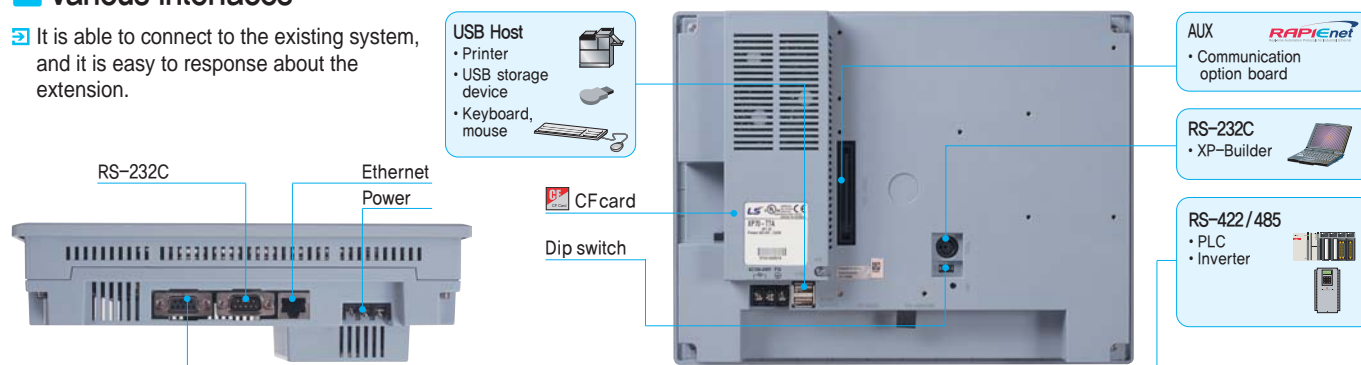
# XGT Panel *XP* Series Specification

## Interface and system organization

XGT Panel provides reliable quality and responsible technology

### Various interfaces

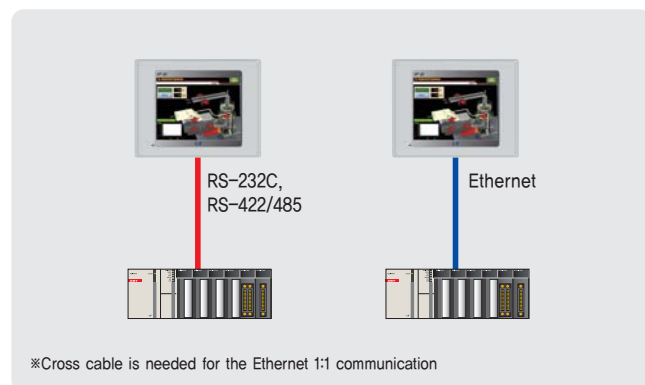
It is able to connect to the existing system, and it is easy to response about the extension.



### System organization

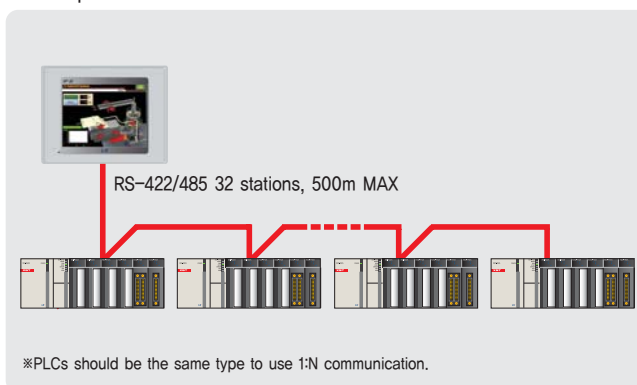
#### 1 : 1 Serial / Ethernet communication

One PLC to one XGT Panel



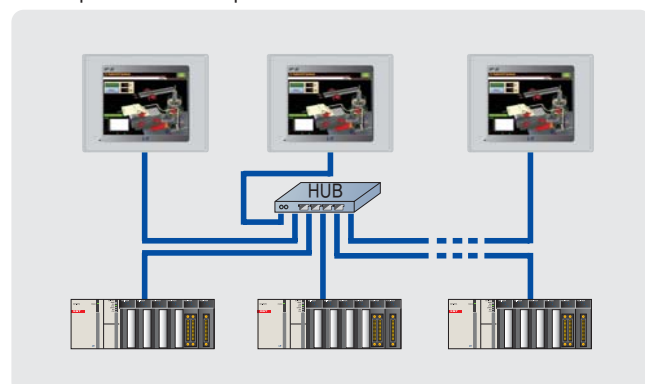
#### 1 : N Serial communication

Multiple PLCs to one XGT Panel



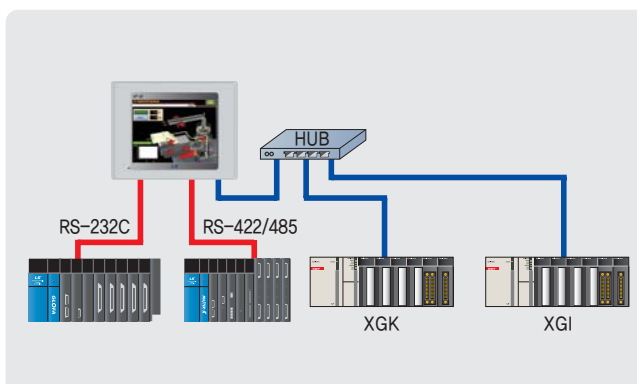
#### N : M (Ethernet communication)

Multiple PLCs to multiple XGT Panels



#### Simultaneous communication with 4 controllers

4 kinds of PLCs to one XGT Panel



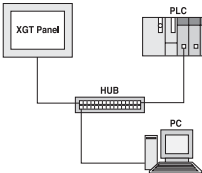
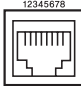
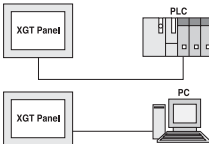


## Cable

The technology began to offer better operating environment

### Cable standards and wiring method



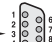
#### Ethernet cable standards and wiring

Item	Description																																								
Cable standard	<ul style="list-style-type: none"><li>Type: UTP / FTP / STP cable</li><li>Standard: CAT.5 / Enhanced CAT.5 / CAT.6</li></ul>																																								
	Communicate with a PC or a PLC/Controller through a hub.																																								
Direct cable	<div><div></div><div><table><tr><td>1</td><td>wh/or</td><td>↔</td><td>wh/or</td><td>1</td></tr><tr><td>2</td><td>or</td><td>↔</td><td>or</td><td>2</td></tr><tr><td>3</td><td>wh/grn</td><td>↔</td><td>wh/grn</td><td>3</td></tr><tr><td>4</td><td>blu</td><td>↔</td><td>blu</td><td>4</td></tr><tr><td>5</td><td>wh/blu</td><td>↔</td><td>wh/blu</td><td>5</td></tr><tr><td>6</td><td>grn</td><td>↔</td><td>grn</td><td>6</td></tr><tr><td>7</td><td>wh/brn</td><td>↔</td><td>wh/brn</td><td>7</td></tr><tr><td>8</td><td>brn</td><td>↔</td><td>brn</td><td>8</td></tr></table><div><div>12345678</div></div>← Ethernet Jack</div></div>	1	wh/or	↔	wh/or	1	2	or	↔	or	2	3	wh/grn	↔	wh/grn	3	4	blu	↔	blu	4	5	wh/blu	↔	wh/blu	5	6	grn	↔	grn	6	7	wh/brn	↔	wh/brn	7	8	brn	↔	brn	8
1	wh/or	↔	wh/or	1																																					
2	or	↔	or	2																																					
3	wh/grn	↔	wh/grn	3																																					
4	blu	↔	blu	4																																					
5	wh/blu	↔	wh/blu	5																																					
6	grn	↔	grn	6																																					
7	wh/brn	↔	wh/brn	7																																					
8	brn	↔	brn	8																																					
	Connect with a PC or a PLC/Controller directly (1:1 connection).																																								
Cross cable	<div><div></div><div><table><tr><td>1</td><td>wh/or</td><td>↔</td><td>wh/grn</td><td>1</td></tr><tr><td>2</td><td>or</td><td>↔</td><td>grn</td><td>2</td></tr><tr><td>3</td><td>wh/grn</td><td>↔</td><td>wh/or</td><td>3</td></tr><tr><td>4</td><td>blu</td><td>↔</td><td>blu</td><td>4</td></tr><tr><td>5</td><td>wh/blu</td><td>↔</td><td>wh/blu</td><td>5</td></tr><tr><td>6</td><td>grn</td><td>↔</td><td>or</td><td>6</td></tr><tr><td>7</td><td>wh/brn</td><td>↔</td><td>wh/brn</td><td>7</td></tr><tr><td>8</td><td>brn</td><td>↔</td><td>brn</td><td>8</td></tr></table></div></div>	1	wh/or	↔	wh/grn	1	2	or	↔	grn	2	3	wh/grn	↔	wh/or	3	4	blu	↔	blu	4	5	wh/blu	↔	wh/blu	5	6	grn	↔	or	6	7	wh/brn	↔	wh/brn	7	8	brn	↔	brn	8
1	wh/or	↔	wh/grn	1																																					
2	or	↔	grn	2																																					
3	wh/grn	↔	wh/or	3																																					
4	blu	↔	blu	4																																					
5	wh/blu	↔	wh/blu	5																																					
6	grn	↔	or	6																																					
7	wh/brn	↔	wh/brn	7																																					
8	brn	↔	brn	8																																					


#### NOTE

- Ethernet setting**
  - Ethernet setting is on the XGT Panel.
  - Communication parameters with a PLC/controller are set up on the XP-Builder.
- 1:1 connection**
  - Under the conditions that is impossible to use a LAN, a one-to-one connection with a cross cable is suited to send/receive a project data.
- Making a cable**
  - If a Lock part of the Ethernet jack is damaged, it cannot be fixed to a RJ45 connector (Ethernet connector). It occurs a contact badness.
  - A Plug Cover is recommended.

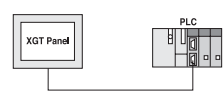
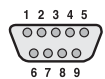
#### Tool cable standards and wiring

Item	Description																															
Cable standard	• Name: PMC-310S (Download cable) • Length: A soft tube type 1m																															
Structure and wiring	Direct connection to a PC																															
	<div><div></div><div><table><tr><td>1</td><td></td><td>CD</td><td>1</td></tr><tr><td>2</td><td>RD</td><td>RD</td><td>2</td></tr><tr><td>3</td><td>SG</td><td>SD</td><td>3</td></tr><tr><td>4</td><td></td><td>SG</td><td>4</td></tr><tr><td>5</td><td></td><td>DSR</td><td>5</td></tr><tr><td>6</td><td>SD</td><td>RTS</td><td>7</td></tr><tr><td></td><td></td><td>CTS</td><td>8</td></tr><tr><td></td><td></td><td></td><td>9</td></tr></table><div><div>XGT Panel (Male)</div><div></div><div>PC (Female)</div><div></div></div></div></div>	1		CD	1	2	RD	RD	2	3	SG	SD	3	4		SG	4	5		DSR	5	6	SD	RTS	7			CTS	8			
1		CD	1																													
2	RD	RD	2																													
3	SG	SD	3																													
4		SG	4																													
5		DSR	5																													
6	SD	RTS	7																													
		CTS	8																													
			9																													

#### XP30-BTE connector pin assignment

X1-05-DTE connector pin assignment									
Item	Description								
Wiring	1	2	3	4	5	6	7	8	9
	TX	RX	SG	TX+	TX-	RX+	RX-	SG	FG
	RS-232C			RS-422/485				FG	
									

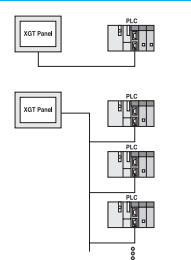
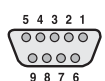
#### RS-232C cable standards and wiring

Item	Description																		
Cable standard	<ul style="list-style-type: none"> <li>(UL) Style 2464 AWG24 cable is recommended.</li> <li>Max cable length is 15m.</li> <li>Shielded cables are recommended.</li> </ul>																		
Structure and wiring	<p>Connect to PLC or Controller (1:1).</p>  <ul style="list-style-type: none"> <li>Connector pin of the XGT Panel</li> <li>D-Sub 9P, Male connector</li> </ul> <table border="1"> <tr><td>1</td><td></td></tr> <tr><td>2</td><td>RD</td></tr> <tr><td>3</td><td>SD</td></tr> <tr><td>4</td><td></td></tr> <tr><td>5</td><td>SG</td></tr> <tr><td>6</td><td></td></tr> <tr><td>7</td><td></td></tr> <tr><td>8</td><td></td></tr> <tr><td>9</td><td></td></tr> </table>  <p>1 2 3 4 5 6 7 8 9</p>	1		2	RD	3	SD	4		5	SG	6		7		8		9	
1																			
2	RD																		
3	SD																		
4																			
5	SG																		
6																			
7																			
8																			
9																			

#### NOTE

- Communication setting**
  - Communication parameters with a PLC/controller are set up on the XP-Builder.
  - Refer to the communication user manual about the communication wiring with a PLC/controller.
  - XGT Panel does not support a flow control.
- Making a cable**
  - Under the conditions that is impossible to use a LAN, a one-to-one connection with a cross cable is suited to send / receive a project data.
  - Make a cable meet PLC / controller's standard requirements.

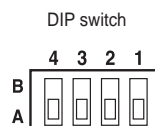
#### RS-422/485 cable standards and wiring

Item	Description																		
Cable standard	<ul style="list-style-type: none"> <li>(UL) Style 2464 AWG22 cable is recommended.</li> <li>Max cable length is 500m.</li> <li>Shielded cables are recommended.</li> </ul>																		
Structure and wiring	<p>Connect to PLC or Controller (1:1).</p>  <ul style="list-style-type: none"> <li>Connector pin of the XGT Panel</li> <li>D-Sub 9P, Female connector</li> </ul> <table border="1"> <tr><td>1</td><td></td></tr> <tr><td>2</td><td></td></tr> <tr><td>3</td><td>SG</td></tr> <tr><td>4</td><td>TX+</td></tr> <tr><td>5</td><td>TX-</td></tr> <tr><td>6</td><td>SG</td></tr> <tr><td>7</td><td></td></tr> <tr><td>8</td><td>RX+</td></tr> <tr><td>9</td><td>RX-</td></tr> </table>  <p>5 4 3 2 1 9 8 7 6</p>	1		2		3	SG	4	TX+	5	TX-	6	SG	7		8	RX+	9	RX-
1																			
2																			
3	SG																		
4	TX+																		
5	TX-																		
6	SG																		
7																			
8	RX+																		
9	RX-																		

#### NOTE

- Communication setting**
  - Communication parameters with a PLC/controller are set up on the XP-Builder.
  - Refer to the communication user manual about the communication wiring with a PLC/controller.
  - Set up a terminal resistance using a dip switch.
- Making a cable**
  - A cable should be produced as a male type because the XGT Panel's connector is a female type.
  - Connect the 4th(TX+) to the 8th(RX+) and the 5th(TX-) to the 9th(RX-) to make a RS-485 cable.

DIP switch	Description of the switch
1	No use
2	A Normal operation (Default)
	B Update Windows CE
3	A Watchdog On (Default)
	B Watchdog Off
4	A RS-422/485 terminal resistance (120Ω)
	B No RS-422/485 terminal resistance

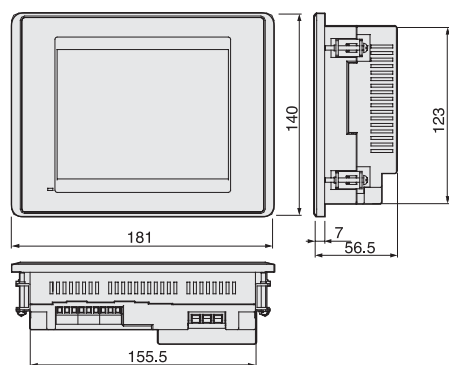


# XGT Panel *XP* Series Specification

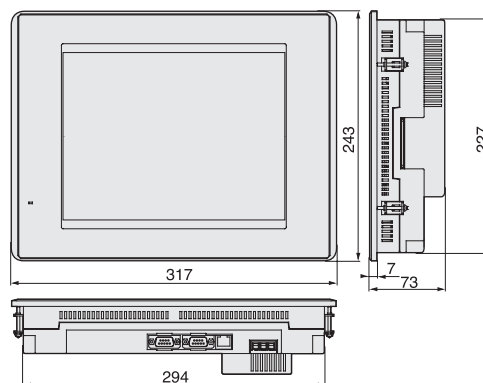
## Dimension

Unit : mm

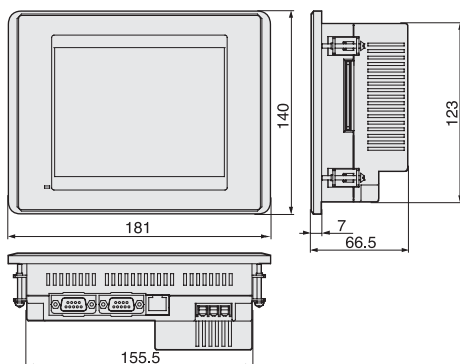
XP30-BTE / TTE



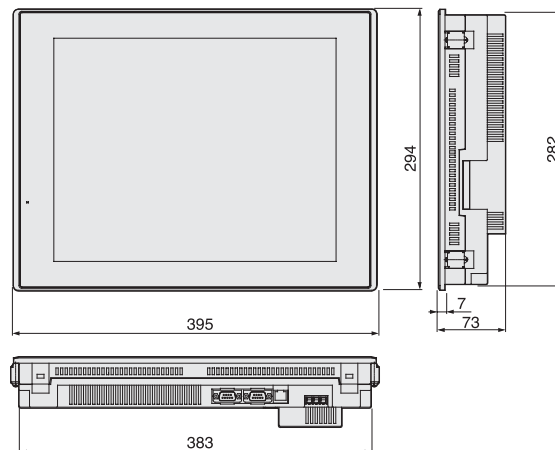
XP70-TTA / XP80-TTA



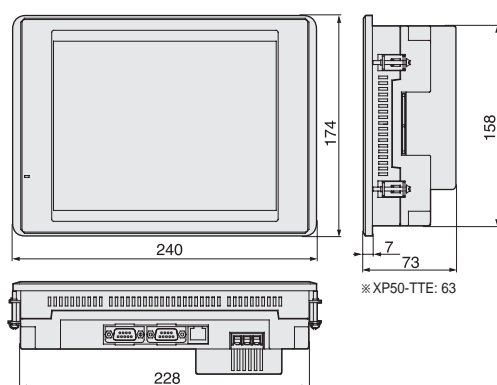
XP30-BTA / TTA



XP90-TTA



XP50-TTA / TTE





# EXTENSION TOTAL SOLUTION TRANSMISSION

## General information

No.	Item	Description	Standard
1	Ambient temperature	0℃~+50℃	
2	Storage temperature	-20℃~+60℃	
3	Ambient humidity	10~85% RH, without dew condensation	
4	Storage humidity	10~85% RH, without dew condensation	
5	Vibration resistance	Occasional vibration	10 times each direction (X, Y, and Z)
		Frequency	
		Acceleration	
		Amplitude	
		5 ≤ f < 9Hz	
		9 ≤ f ≤ 150Hz	
		Continuous vibration	
		Frequency	
		Acceleration	
		Amplitude	
		5 ≤ f < 9Hz	
		9 ≤ f ≤ 150Hz	
6	Shock resistance	* Maximum shock acceleration: 147% (15g) * Authorization time: 11ms * Pulse waveform: Half-sine wave (3 times each of X, Y, and Z)	IEC 61131-2
7	Noise resistance	Square wave impulse noise	AC : ±1,500V DC : ±1,000V
		Electrostatic discharge	Voltage : 6kV (Contact discharge)
		Radiated electromagnetic field noise	27 ~ 500MHz, 10V/m
		Fast transient / Burst noise	Power module / Digital IO, Analog IO, Communication interface
8	Operating ambience	Free from corrosive gases and excessive dust	2kV / 1kV
9	Altitude	Up to 2,000m (6,562ft)	
10	Pollution degree	Less than equal to 2	
11	Cooling method	Air-cooling	

## Specification

Item		XP30-BTE/DC	XP30-BTA/DC	XP30-TTE/DC	XP30-TTA/DC	XP50-TTE/DC	XP50-TTA/DC	XP70-TTA/AC XP70-TTA/DC	XP80-TTA/AC XP80-TTA/DC	XP90-TTA/AC	
		Mono		Color							
Display description		Mono Blue LCD		TFT Color LCD							
Display Size (inch)		14cm (5.7")				21cm (8.4")		26cm (10.4")		31cm (12.1")	38cm (15")
Resolution		320×240				640×480		800×600		1024×768	
Color		8-bit Gray Scale		256 Color	65,536 Color	256 Color	65,536 Color				
Backlight		LED			CCFL (whole LCD), auto On/ Off		CCFL(Replaceable, LCD) auto on/off				
		50,000Hours			60,000Hours		50,000Hours				
Contrast		Adjustable		Fixed							
Luminance		230cd/m²		210cd/m²	400cd/m²	200cd/m²	480cd/m²	430cd/m²	400cd/m²	450cd/m²	
Viewing angle		Up/Down(Degree)		20/40	80/80	70/50	20/20	50/60	45/65	45/75	50/60
		Left/Right(Degree)		45/45	80/80	70/70	45/45	65/65	65/65	65/65	75/75
Touch panel		4-Wire System Analog					8-Wire System Analog				
movement LED		Green : Run (Monitoring, download drawing data)					Red : Error (Communication error, drawing data error)				
Memory	Display data	4MB	10MB	4MB	10MB	4MB	10MB			20MB	
	Backup data	128KB	512KB	128KB	512KB (logging, alarm, data saving)		128KB	512KB (logging, alarm, data saving)			
Ethernet		—	1ch, IEEE802.3, 10/100Base-T	—	1ch, IEEE802.3, 10/100Base-T	—	1ch, IEEE802.3, 10/100Base-T				
USB Interface		USB Host X 1	USB Host X 2	USB Host X 1	USB Host X 2	USB Host X 1	USB Host X 2				
Serial	RS-232C	2ch (1 port for PC Communication)									
	RS-422/485	1ch, 422/485 optional mode									
CF memory card interface		—	CFcard (TYPE-I) X 1	—	CFcard (TYPE-I) X 1	—	CFcard (TYPE-I) X 1				
AUX interface		—	optional	—	optional	—	optional				
Certification		CE, UL, KCC									
Protection		IP65 (Front Water Proof Structure)									
Size (W×H×D)mm		181 x 140 x 56.5	181 x 140 x 66.5	181 x 140 x 56.5	181 x 140 x 66.5	240 x 174 x 63	240 x 174 x 73	317 x 243 x 73		395 x 294 x 73	
Panel Cut (W×H)mm		155.5 x 123				228 x 158		294 x 227		383 x 282	
Weight (kg)		0.62	0.75	0.62	0.75	1.2	1.4	2.2	2.4	3.9	
Power	Rated voltage		DC 24V					AC100~220V, DC 24V		AC100~220V	
	Permitted voltage	AC	—					MIN 85 VAC, MAX 264 VAC			—
		DC	MIN 19.2 VDC, MAX 28.8 VDC								
	Watt (W)	AC	—					37		40	46
DC		5	8.5	5	8.5	13	20	27	30	—	

## Controller with connectivity

Maker	LSIS				MODICON	Mitsubishi			OMRON	OEMax	ROCKWELL	KDT	DasaRobot	Matsushita	SIEMENS	PARKER	BYD AUTO	PROFACE	LS MECAPON	YASKAWA			
Model	GLOFA-QM MASTER-K series	XGR/XGK/ XGI/XGB series	LSBUS [Drive]	MODBUS [Drive]	MODBUS	MELSEC Q	MELSEC AnN, AnS	MELSEC FX	CS/CJ Series	COM1H	NX-CCU+	SLC500	Micro/ COMPACT/ CONTROL LOGIX	CIMON	IM-SIGMA	FP Series	S7-200	S7-300	Hi-Drive	Dedicated controller	Memory Link	VS/VP Drive	MEM OBUS
CPU Port	●	●	—	—	—	● (Except QnU)	—	●	—	—	—	● (DP1)	● (DP1)	—	—	—	● (PP1)	● (MPI)	—	—	—	—	●
Link	●	●	●	●	●	●	●	●	●	●	●	—	—	●	●	●	—	●	●	●	●	●	●
Link [1:N]	●	●	●	●	●	●	●	●	●	●	●	—	—	●	●	●	—	●	●	—	—	—	●
Ethernet	●	●	—	—	●	—	—	—	●	—	—	—	Ethernet/IP	—	—	—	—	—	—	—	—	—	—

## Green Innovators of Innovation



### Safety Instructions

- For your safety, please read user's manual thoroughly before operating.
- Contact the nearest authorized service facility for examination, repair, or adjustment.
- Please contact qualified service technician when you need maintenance.  
Do not disassemble or repair by yourself !
- Any maintenance and inspection shall be performed by the personnel having expertise concerned.

## LSIS Co., Ltd.

© 2008.01 LSIS Co., Ltd. All Rights Reserved.

### ■ HEAD OFFICE

LS-ro 127(Hogye-dong), Dongan-gu, Anyang-si,  
Gyeonggi-do 431-848, Korea

- **Asia/ South America**  
+82-2-2034-4888 cshwang@lsis.biz (Charles Hwang)
- **Western Europe**  
+82-2-2034-4676 sukyong@lsis.biz (Brian Choi)
- **CIS / Turkey / Eastern Europe / Israel**  
+82-2-2034-4879 dkimc@lsis.biz (Daniel Kim)
- **North America**  
+82-2-2034-4471 pikwon@lsis.biz (Paul Inbeom Kwon)
- **Oceania**  
+82-2-2034-4394 kacho@lsis.biz (Kendra Cho)
- **Africa**  
+82-2-2034-4467 myleed@lsis.biz (Henry Lee)
- **MIDDLE EAST**  
+971-4-886-5360 khchoi1@lsis.biz (Lambert Choi)

### ■ Global Network

- **LSIS (ME) FZE » Dubai, U.A.E.**  
Address Jafza View Tower Lob 19, Room 205 Along Sheikh Zayed Road Jebel Aali Free Zone Dubai, United Arab Emirates,  
Tel + 971-4-886-5360 Fax + 971-4-886-5361 E-mail jungyongl@lsis.biz
- **LSIS Europe B.V.**  
Address Tupolevlaan 48, 1119 NZ, Schiphol-Rijk The Netherlands  
Tel +31-20-654-1420 Fax +31-02-654-1429 E-mail junshickp@lsis.biz
- **LSIS (Dalian) Co., Ltd » Dalian, China**  
Address No. 15.Liaohexi 3-Road, Economic and Technical Development zone, Dalian 116600, China  
Tel +86-411-8730-7510 Fax +86-411-8731-8277 E-mail cuibx@lsis.com.cn
- **LSIS (Wuxi) Co., Ltd » Wuxi, China**  
Address 102-A, National High & New Tech Industrial Development Area, Wuxi, Jiangsu, 214028, P.R. China  
Tel +86-510-8534-6666 Fax +86-510-8534-4078 E-mail caidx@lsis.com.cn
- **LS-VINA IS Co., Ltd » Hanoi, Vietnam**  
Address Nguyen Khe Dong Anh, Hanoi  
Tel +84-4-38820 222.3 Fax +84-4-38820 220 E-mail srjo@lsisvina.com, ylsuk@lsisvina.com
- **LSIS Tokyo Office » Tokyo, Japan**  
Address 16FL, Higashi-Kan, Akasaka Twin Tower 2-17-22, Akasaka, Minato-ku Tokyo 107-0052, Japan  
Tel +81-3-3582-9128 Fax +81-3-3582-2667 E-mail jschuna@lsis.biz
- **LSIS Shanghai Office » Shanghai, China**  
Address Room E-G, 12FL Huamin Empire Plaza, No.726, West Yan'an Road Shanghai 200050, P.R. China  
Tel +86-21-5237-9977(501) Fax +89-21-5237-7189 E-mail liyong@lsis.com.cn
- **LSIS Beijing Office » Beijing, China**  
Address B-Tower 17FL, Beijing Global Trade Center, No. 36, East BeisanHuan-Road, DongCheng-District, Beijing 100013, P.R. China  
Tel +86-10-5825-6027(666) Fax +86-10-5825-6028 E-mail xunmj@lsis.com.cn
- **LSIS Guangzhou Office » Guangzhou, China**  
Address Room 1403,14FL, New Poly Tower, 2 Zhongshan Liu Road,Guangzhou,P.R.China  
Tel +86-20-8326-6754 Fax +86-20-8326-6287 E-mail chenxs@lsis.com.cn
- **LSIS Chengdu Office » Chengdu, China**  
Address Room 1710,17FL, Huamin Empire Plaza, No.1 Fu Xing Street,Chengdu,610016, P.R. China  
Tel +86-28-8670-3201 Fax +86-28-8670-3203 E-mail yangcf@lsis.com.cn
- **LSIS Qingdao Office » Qingdao, China**  
Address Room 2001,YinHe Bldg, No. 29 Shandong Road, Qingdao, 266071, P.R. China  
Tel +86-532-8501-6058 Fax +86-532-8501-6057 E-mail wangzy@lsis.com.cn

Specifications in this catalog are subject to change without notice due to continuous product development and improvement.